

## Model WH-HW Mini-Seal™ Hard Wire Harnesses



Model WH-HW-4-10-0  
HARD WIRE HARNESS



### Description

Because of the compact design of the 4000 series purge unit, the WH-HW-4 provides an explosion-proof seal that will fit between the EPCU's explosion-proof enclosure and the pressurized enclosure. The WH-HW-4 wire harness features a 10 to 15-inch wire length on one end for termination to the EPCU and a 15-foot wire length on the opposing end for field termination. The ends are separated by Pepperl+Fuchs' exclusive Mini-Seal™ conduit fitting, which installs easily between the purging system and protected enclosure. This extremely compact fitting requires a 3/4 inch conduit "knockout" entry through the protected enclosure's bulkhead. After insertion, a gasketed locknut is provided to firmly secure the fitting and seal the protected enclosure.

#### IMPORTANT NOTE:

Due to liability restrictions and approval limitations, the Pepperl+Fuchs Mini-Seal™ may not be sold as an approved device when used in any manner other than prescribed herein.

### Model WH-HW-4 Configurations

The WH-HW-4 wire harness contains THHN 14/16 gauge (AWG) stranded copper wires, and enables the connection from the EPCU enclosure power contacts to the pressurized enclosure through the Mini-Seal. Several options allow customers to specify the connections for their applications.

A common option is to jumper the EPCU power to one side of the enclosure contact so when the enclosure contacts switch after a successful purging, there is power running to the pressurized enclosure. Other configurations are available. Please see nomenclature for selections.

**Note:** The WH-HW-4 wire harness is not recommended for three phase and current outputs exceeding enclosure contact ratings. Pepperl+Fuchs HW-AX-4 wire harness can be used to initiate a contactor suitable for higher ratings. See page 92 for more information.

### Factory Installation

Pepperl+Fuchs wire harnesses are suitable for field installation, but may also be installed by factory technicians upon request. Factory installed harnesses are thoroughly tested, reduce system integration effort and significantly reduce costly field wiring labor. Please consult with your Pepperl+Fuchs sales representative for more information.

### Material Specifications

#### MINI-SEAL™ FITTING

Mini-Seal™ Body:	Copper-Free Aluminum
Mini-Seal™ Plug:	Zinc Plated Steel
Sealing Compound:	Chico® "A" Powder
Internal Wire Separator:	Lexan®

#### WH-HW-4 WIRE HARNESS

Cable Length:	15 feet
Power & Signal Wire Jackets:	4 mil Nylon
	<b>Power Wire</b>
Wire Insulation:	THHN 15 mil PVC
Wire Conductor:	14 AWG 19 Strand Copper
	<b>Signal Wire</b>
Wire Insulation:	THHN 15 mil PVC
Wire Conductor:	18 AWG 7 Strand Copper

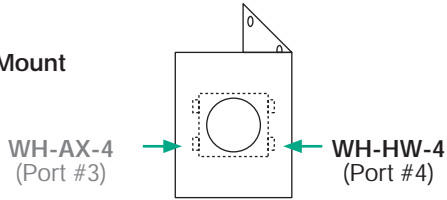
4000  
SERIES

Type X & Ex [p]

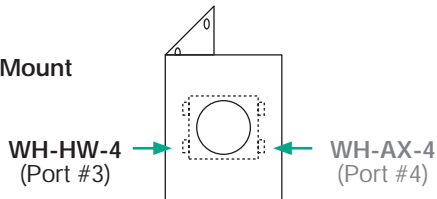
## Mounting Configurations

### Vertical System EPCU

Left Mount

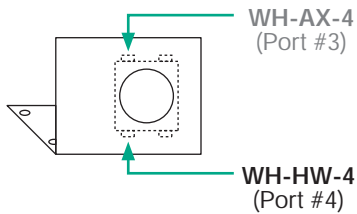


Right Mount

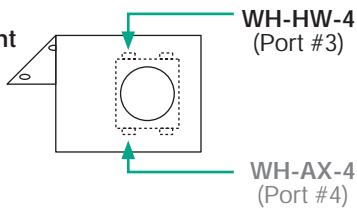


### Horizontal System EPCU

Top Mount



Bottom Mount



If the wiring harness is installed from the factory, all wires inside the EPCU will be connected. Any loose wire ends will be tagged for easy identification.

## Model WH-HW-4 Harness Codes:

WH - HW - 4 - 1 -

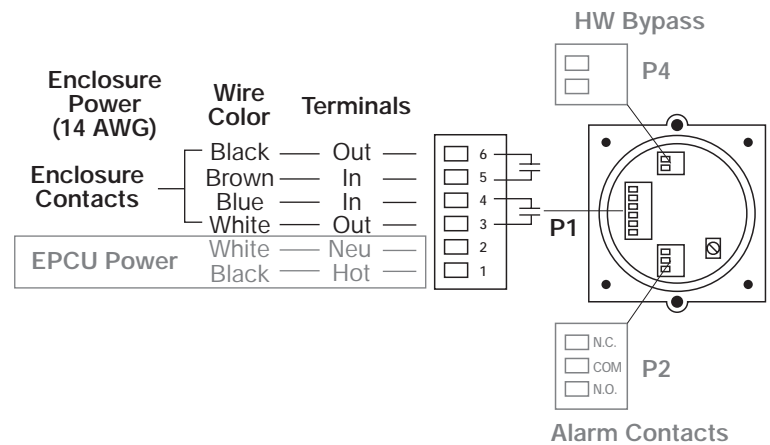
Powered Contacts from EPCU Power

- 0 - No EPCU power jumper with Enclosure Power Contacts, [2-SPST (4-wires), w/GND]
- 1 - EPCU power jumpered to one side of Enclosure Power Contacts (terminals 4 & 5), other side of Enclosure Power Contacts [2-wire w/GND output (terminals 3 & 6 with ground)]

Installed Wire Harness

- 0 - Not Installed
- 1 - Installed and Wired

## Predesignated HW Harness Location



4000 SERIES

Type X & Ex [p]

## Example Harness Configuration

