

## Model WH-AX Mini-Seal™ Auxiliary Wire Harnesses



Model WH-AX-4-00-0  
AUXILIARY WIRE HARNESS



### Description

The WH-AX-4 wire harness features a 10 to 15-inch wire length on one end for termination to the EPCU and a 15-foot wire length on the opposing end for field termination. The ends are separated by Pepperl+Fuchs' exclusive Mini-Seal™ conduit fitting, which installs easily between the EPCU housing and all other power connections

#### IMPORTANT NOTE:

Due to liability restrictions and approval limitations, the Pepperl+Fuchs Mini-Seal™ may not be sold as an approved device when used in any manner other than prescribed herein.

### Model WH-AX-4 Configurations

The model WH-AX-4 wire harness contains THHN 14 gauge wire for power to the EPCU and THHN 16 gauge wires for the optional alarm outputs and hardwire bypass options. This wire harness is connected to the port opposite the WH-HW-4 wire harness and away from the pressurized enclosure. Customers may use their own seal on the port because the space requirements are not as tight as those for the WH-HW-4 and the WH-IS-4 wire harnesses. For easy installation, the WH-AX-4 along with the WH-HW-4 or the WH-IS-4 wire harnesses, provide a complete wiring solution.

The enclosure power contacts on the EPCU may not be adequate to supply the power requirements to the pressurized enclosure. A separate contactor may be needed to switch these higher loads. The enclosure power contacts are then used to switch a contactor that will connect or disconnect the supply power to the pressurized enclosure. If the contactor is located in the hazardous area, it should be protected using a method suitable for the area.

### Factory Installation

Pepperl+Fuchs wire harnesses are suitable for field installation, but may also be installed by factory technicians upon request. Factory installed harnesses are thoroughly tested, reduce system integration effort and significantly reduce costly field wiring labor. Please consult with your Pepperl+Fuchs sales representative for more information.

### Material Specifications

#### MINI-SEAL™ FITTING

Mini-Seal™ Body:	Copper-Free Aluminum
Mini-Seal™ Plug:	Zinc Plated Steel
Sealing Compound:	Chico® "A" Powder
Internal Wire Separator:	Lexan®

#### WH-AX-4 WIRE HARNESS

Cable Length:	15 feet
Power & Signal Wire Jackets:	4 mil Nylon

#### Power Wire

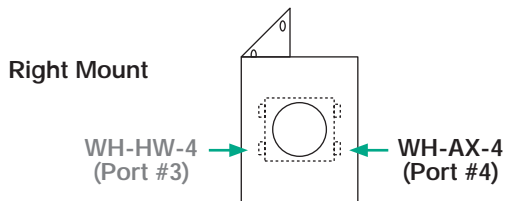
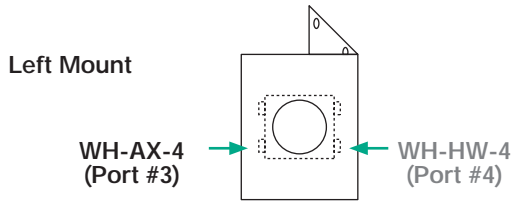
Wire Insulation:	THHN 15 mil PVC
Wire Conductor:	14 AWG 19 Strand Copper

#### Signal Wire

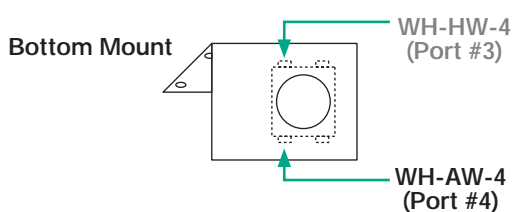
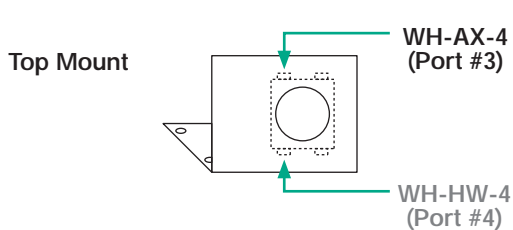
Wire Insulation:	THHN 15 mil PVC
Wire Conductor:	18 AWG 7 Strand Copper

## Mounting Configurations

### Vertical System EPCU

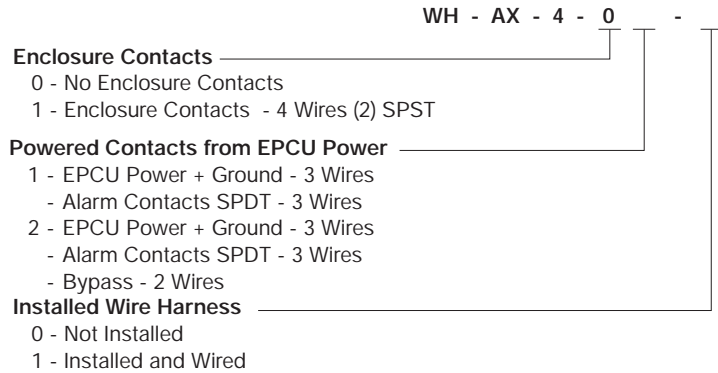


### Horizontal System EPCU

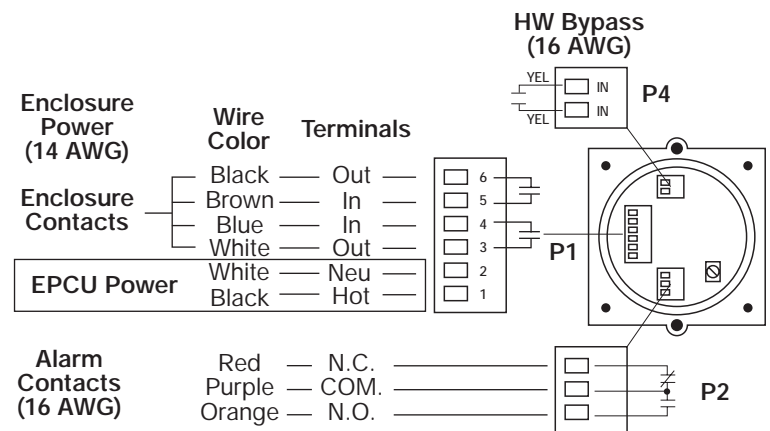


If the wiring harness is installed from the factory, all wires inside the EPCU will be connected. Any loose wire ends will be tagged for easy identification.

## Model WH-AX-4 Harness Codes:

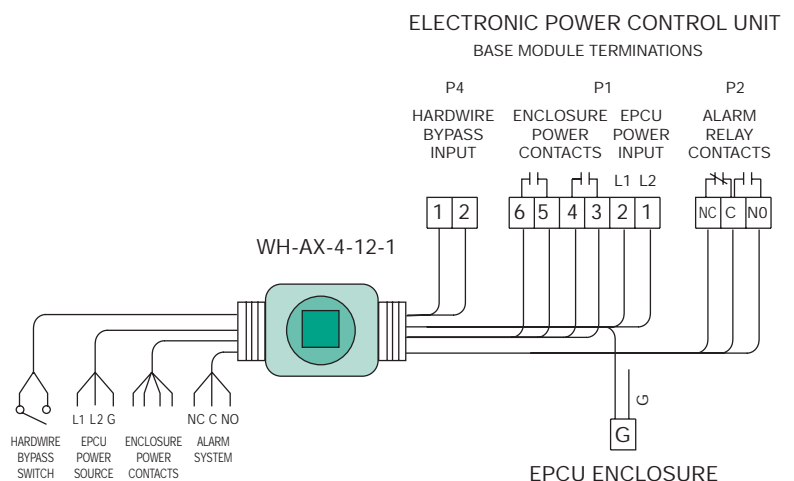


## Predesignated Auxiliary Harness Location



**NOTE:** For high power circuits the EPCU contacts should be used to energize a separate contactor or for the enclosure power.

## Example Harness Configuration



4000 SERIES

Type X & Ex [p]